

**COMPASS**  
TRAILERS  
By Novae

**WHERE YOUR  
PASSION MEETS  
THE ROAD**



**COMPASS**  
TRAILERS  
By Novae®

VALUE-DRIVEN, HIGH QUALITY  
ENCLOSED CARGO TRAILERS



## **WE MEAN BUSINESS**

COMPASS Trailers is a division of Novae LLC, one of the largest, fastest-growing trailer manufacturers in the USA. Our entire company is driven by the knowledge that many of our customers rely on our trailers for their very livelihood. When it comes to providing you with smart engineering, exceptional build quality and top-of-the line components, we will never compromise.

**03** CARGO



**04-05** CAR HAULERS



**06-07** RACE



**08** CONTRACTOR



**09** RECREATIONAL



# CARGO TRAILERS

## INDIGO DLX FEATURES

- Flat Top, V-Nose Profile
- Tube Roof Bows
- 32" Entry Door with Flushlock (optional on 5w)
- Rear Ramp with Assist
- Smooth Aluminum Fenders
- .030 Aluminum Exterior
- Color Matching Screws
- Seamless Aluminum Roof
- 16" Stone Guard
- 3/4" High-Performance Wood Floor



Ramp Door



Aluminum Frame Entry Door

Size	GVWR	Size	GVWR
5' x 8' - 5' x 10'	3K	6' x 12'	7K
6' x 10' - 6' x 14'	3K	7' x 12' - 7' x 16'	7K
		8.5' x 16' - 8.5' x 24'	7K
		8.5' x 18' - 8.5' x 24'	10K

## JASPER SE FEATURES

- 6" Tube Main Frame (8.5' Wide Only)
- 16" On-Center Full Height Crossmembers
- Triple Tube Tongue on all 8.5' Wide Models
- 16" On-Center Tube Sidewalls
- 24" Deep Sloped V-Nose with 6" Drop (30" on 8.5' Wide)
- 32" Wide Entry Door with Flush Lock (36" on 8.5' Wide)
- Metal Wire Door Holdback
- Ramp Door with Assist and Ramp Flap
- Radial Tires
- Screwless, .030 Aluminum Exterior
- Seamless Aluminum Roof
- Large J-Trim on Ramp Door(s)
- High Performance Wood Walls and Trim
- 3/4" High Performance Wood Flooring



## CANYON FEATURES

- Aluminum or Steel Models Available
- 6" Tongue Extension and Set-Back Jack
- 16" On-Center Tube Sidewalls
- 16" On-Center Roof Bows
- 32" Wide Entry Door with Flush Lock, 36" on 8.5' Wide
- Cast Aluminum Door Holdback
- 15" Aluminum Wheels
- Screwless, .030" Aluminum Exterior
- Large J-Trim on Ramp Door(s)
- High Performance Wood Walls and Trim
- Torsion Axles
- Polished Nose Cap
- LED Taillights with Integrated Backup Light



12" Ramp Extension



LED Dome Lights



Size	GVWR	Size	GVWR	Size	GVWR
5' x 8' - 5' x 10'	3K	6' x 10' - 6' x 14'	7K	7' x 14' - 7' X 20'	10K
6' x 10' - 6' x 14'	3K	7' x 12' - 7' x 20'	7K	7.5' x 14' - 7.5' x 20'	10K
5' x 8' - 5' x 10'	3.5K	7.5' x 14' - 7.5' x 20'	7K	8.5' x 12' - 8.5' x 34'	10K
7' x 12'	3.5K	8.5' x 12 - 8.5' x 20'	7K	8.5' x 12' - 8.5' x 34'	14K

Size	GVWR	Size	GVWR	Size	GVWR
5' x 8' - 5' x 10'	3K	6' x 12'	7K	7' x 14' - 7' X 20'	10K
6' x 10' - 6' x 14'	3K	7' x 12' - 7' x 20'	7K	7.5' x 14' - 7.5' x 20'	10K
5' x 8' - 5' x 10'	3.5K	7.5' x 14' - 7.5' X 20'	7K	8.5' x 16' - 8.5' x 34'	10K
7' x 12'	3.5K	8.5' x 12' - 8.5' x 26'	7K	8.5' x 16' - 8.5' x 24'	14K

Ask About CANYON Gooseneck

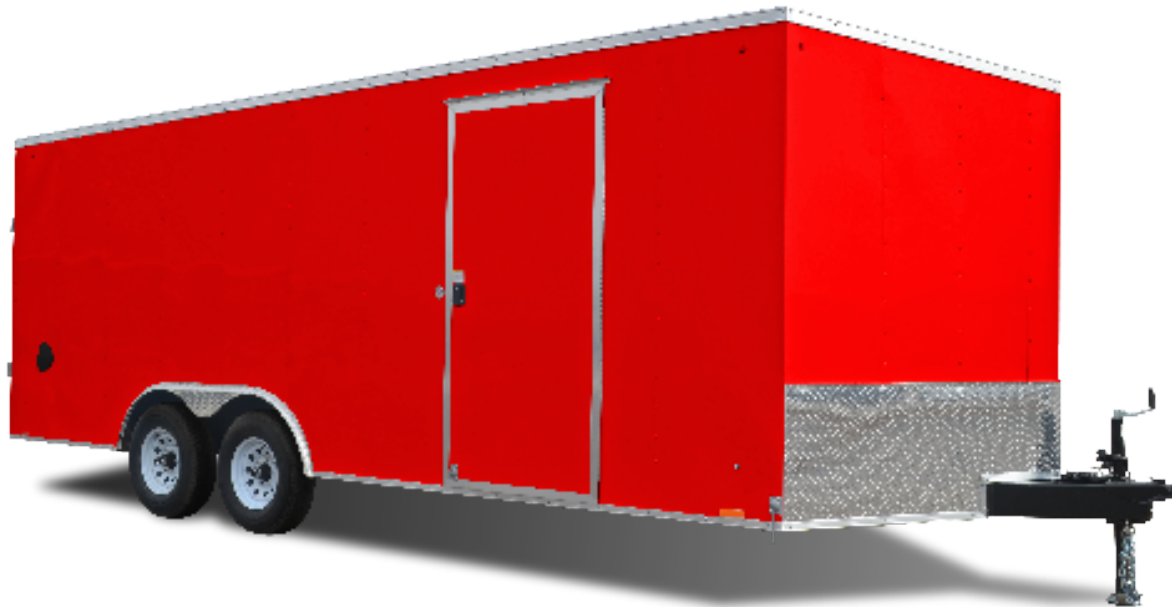
# CAR HAULERS

## INDIGO DLX

### FEATURES

- Flat Top, V-Nose Profile
- Tube Roof Bows
- 32" Entry Door with Flushlock (optional on 5w)
- Rear Ramp with Assist
- Smooth Aluminum Fenders
- .030 Aluminum Exterior
- Color Matching Screws
- Seamless Aluminum Roof
- 16" Stone Guard
- 3/4" High-Performance Wood Floor

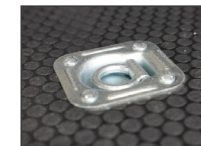
Size	GVWR
8.5' x 16' - 8.5' x 24'	7K
8.5' x 16' - 8.5' x 24'	10K



## JASPER SE

### FEATURES

- 16" On-Center Crossmembers, Tube Sidewalls, and Roof Bows
- Beavertail
- 36" Wide Entry Door with Flush Lock
- Ramp Door with Spring Assist
- 16" Wood Ramp Flap
- Screwless, .030 Aluminum Exterior
- Large J-Trim on Ramp Door(s)
- High Performance Wood Walls and Trim
- Lauan Ceiling Liner Strip
- (4) 5K D-Rings
- LED Taillights with Integrated Backup Light



4 Heavy Duty D-Rings

Size	GVWR
8.5' x 16' - 8.5' x 26'	7K
8.5' x 16' - 8.5' x 28'	10K

# CAR HAULERS

## CANYON

### FEATURES

- 6" Tongue Extension
- 16" On-Center Crossmembers, Tube Sidewalls, and Roof Bows
- Flat Top, 30" Aero Wedge with Radius Nose
- Beavertail
- 2K Set-Back Jack
- Cast Aluminum Door Holdback
- Ramp Door with Spring Assist
- 16" Wood Ramp Flap with Bullnose Cap



48" Entry Door with Flush Lock

- Torsion Brake Axles
- Aluminum Wheels
- Screwless, .030 Aluminum Exterior
- Seamless Aluminum Roof
- Brite Nose Cap
- High Performance Wood Walls and Trim
- White Thermoply Ceiling Liner
- (4) 5K D-Rings

Size	GVWR
8.5' x 16' - 8.5' x 26'	7K
8.5' x 16' - 8.5' x 28'	10K
8.5' x 20' - 8.5' x 28'	14K



## CANYON GOOSENECK

### FEATURES

- 8" Tube Main Frame
- 16" On-Center Crossmembers, Tube Sidewalls, and Roof Bows
- Beavertail
- (2) 12K Manual 2-Speed Jacks
- 36" Wide Entry Door with Flush Lock
- Rear Ramp Door with Spring Assist
- 16" Wood Ramp Flap with Bullnose Cap
- Torsion Brake Axles
- Radial Tires on Aluminum Wheels
- Screwless, .030 Aluminum Exterior
- Seamless Aluminum Roof
- Brite Front Radius Corners
- Large J-Trim on Ramp Door(s)
- Brite Aluminum Rear Hoop
- High Performance Wood Walls and Trim
- White Vinyl Ceiling with White Aluminum Coves
- 3/4" High Performance Wood Flooring
- (4) 5K D-Rings

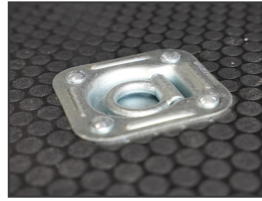


48" Entry Door with Flush Lock

Size	GVWR
8.5' x 28' - 8.5' x 34'	10K
8.5' x 28' - 8.5' x 34'	14K
8.5' x 36' - 8.5' x 38'	15K
8.5' x 40' - 8.5' x 52'	21K



# RACE TRAILERS



4 Heavy Duty D-Rings

## CANYON

### FEATURES

- 9 mm White Walls
- White Vinyl Ceiling with Aluminum Covers
- Screwless, .030 Aluminum Exterior
- Torsion Axles
- Spring Assist Ramp Door
- 16" Ramp Extension with Bullnose Extrusion
- Aluminum Wheels

- 84" Interior Height
- 6" Extended Tongue with Adjustable Coupler
- 11" Deluxe Dome Lights

Size	GVWR
8.5' x 20' - 8.5' x 26'	7K
8.5' x 20' - 8.5' x 34'	10K
8.5' x 20' - 8.5' x 34'	14K
8.5' x 26' - 8.5' x 34'	21K



## CANYON GOOSENECK

### FEATURES

- 8" Tube Main Frame
- 16" On-Center Crossmembers, Tube Sidewalls, and Roof Bows
- Beavertail
- (2) 12K Manual 2-Speed Jacks
- 36" Wide Entry Door with Flush Lock
- Rear Ramp Door with Spring Assist
- 16" Wood Ramp Flap with Bullnose Cap
- Torsion Brake Axles
- Radial Tires on Aluminum Wheels
- Screwless, .030 Aluminum Exterior
- Seamless Aluminum Roof
- Brite Front Radius Corners
- Large J-Trim on Ramp Door(s)
- Brite Aluminum Rear Hoop
- High Performance Wood Walls and Trim
- White Vinyl Ceiling with White Aluminum Covers
- 3/4" High Performance Wood Flooring
- (4) 5K D-Rings



48" Entry Door with Flush Lock

Size	GVWR	Size	GVWR
8.5' x 28' - 8.5' x 34'	10K	8.5' x 36' - 8.5' x 38'	15K
8.5' x 28' - 8.5' x 34'	14K	8.5' x 40' - 8.5' x 52'	21K

# RACE TRAILERS

## OPAL GOOSENECK/FIFTH WHEEL

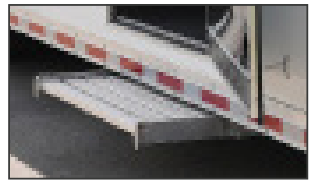
### FEATURES

- (2) 11" LED Dome with Switch
- 48" Entry Door with Flush Lock
- Recessed Horizontal Cam Lock on Ramp Door
- Slide-Out Step and Aluminum Hold Backs
- Torsion Brake Axles

Size	GVWR
8.5' x 28' - 8.5' x 34'	10K
8.5' x 36' - 8.5' x 38'	15K
8.5' x 40' - 8.5' x 52'	21K



## OPAL



Aluminum Slide-Out Step

Size	GVWR
8.5' x 20' - 8.5' x 26'	7K
8.5' x 20' - 8.5' x 32'	10K
8.5' x 20' - 8.5' x 34'	14K
8.5' x 26' - 8.5' x 34'	18K
8.5' x 26' - 8.5' x 34'	21K

### FEATURES

- Bull Nose Racer Profile
- H/D "Truck Body" Top Trim and 5.5" Bottom Trim
- Stainless Cap and Stainless Front Corners
- Torsion Axles
- 16" On-Center Wall Studs, Crossmembers, and Roof Bows
- White Vinyl Walls
- Insulated White Vinyl Ceiling Liner
- Aluminum Wheels
- Screwless, .040 Exterior (White or Black Standard)
- 96" Wide Rear Opening
- Spread Axles with Extruded Fenders
- Stainless Steel Corners and Top Wrap
- Stainless Rear Spoiler





# CONTRACTOR TRAILERS

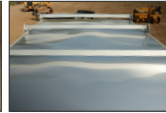
## ACACIA MILLHOUSE

### FEATURES

- 6" A-Frame Triple Tube Tongue
- 6" Tongue Extension
- 16" On-Center Crossmember and Tube Sidewalls
- 8" On-Center Roof Bows
- 7K Set-Back Jack
- 36" Wide Entry Door with Flush Lock
- Cast Aluminum Door Holdback
- Side Door Bar Lock
- Torsion Brake Axle(s)



Heavy-Duty All-Aluminum Toolboxes



Reinforced Roof

- Screwless Exterior
- Seamless Aluminum Roof
- High Performance Wood and ATP Covered Tongue
- (5) HD Ladder Racks with Rear Roller
- (1) Horizontal and (1) Vertical Aluminum Toolbox (12')
- High Performance Wood Walls and Trim
- (2) 48", 110V Wrap Around LED Lights
- (2) 12V 3-Way Toggle Switches
- (2) 12V 10" LED Black Angled Loading Light(s)
- 30 Amp Panel Box
- 30 Amp Motor Base Plug
- 25' 30 Amp Cord
- (4) 15 Amp Interior Receptacles
- (1) 15 Amp GFI Wall Exterior Receptacle



Size	GVWR
7' x 12' - 7' x 20'	7K
8.5' x 12' - 8.5' x 20'	7K
7' x 12' - 7' x 20'	10K
8.5' x 12' - 8.5' x 20'	10K

## ACACIA CARGO

### FEATURES

- 6" A-Frame Triple Tube Tongue
- 16" On-Center Full Height Crossmembers, Tube Sidewalls, Ceilings, and Roof Bows
- 36" Wide Entry Door with Flush Lock
- Cast Aluminum Door Holdback
- Torsion Brake Axles
- Screwless, .030 Aluminum Exterior
- Large J-Trim on Rear Doors
- High Performance Wood Walls and Trim



Size	GVWR
7' x 12' - 7' x 20'	7K
8.5' x 12' - 8.5' x 20'	7K
7' x 12' - 7' x 20'	10K
8.5' x 12' - 8.5' x 20'	10K

# RECREATIONAL TRAILERS

## COMPASS SNOW



Screwless Exterior



Front and Rear Ramps with Spring Assist

Size	GVWR
7' x 19' - 7' x 29'	7K

### FEATURES

- 2" x 5" Double Hollow Aluminum Tube Frame
- 16" On-Center Crossmembers
- 3" x 5" Double Hollow Aluminum Tube Straight Center Tongue
- 16" On-Center Tube Sidewalls and Roof Bows
- 36" Wide Entry Door with Flush Lock
- (2) 14" x 14" Fuel Doors - Passenger Side
- Ramp Door with Spring Assist
- 61" Wide Wedge Ramp Door with Spring Assist
- 12" Wood Flap with Hingeless Brackets
- Aluminum Bar Locks
- 15" Aluminum Wheel
- Screwless, .030 Aluminum Exterior
- 9 mm White Vinyl Walls with Aluminum H-Molding
- 3/4 x 24" High Performance Kick Plate
- White Vinyl Ceiling with H-Molding



## MOAB UTV



Exterior Mounted Spare Tire



Sink and Potti

Size	GVWR
7.5' x 14' - 7.5' x 20'	10K

### FEATURES

- 16" On-Center Crossmembers, Tube Sidewalls, and Roof Bows
- 30" Deep Sloped V-Nose with 12" Drop
- Pull-Out RV Step
- 30" x 27" Egress Window
- Ramp Door with Spring Assist
- 16" Wood Ramp Flap
- 15" Black Aluminum Wheels
- Screwless, .030 Aluminum Exterior
- White Vinyl Ceiling with Black Coves
- Black Rubber Tread Floor Overlay
- Happi-Jac Bed with Queen Mattress
- Porta Potti Cassette Toilet, Sink, Vanity
- (3) 18" LED Lights with Switch
- 30 Watt Solar Panel with 10 Amp Control Panel





# THE COMPASS TRAILERS ADVANTAGE

For over 20 years, COMPASS has been known for innovation, durability and unequaled performance. COMPASS offers a wide selection of trailers with unbeatable features and value. Whether you need a specially-customized trailer for your business or a no-frills trailer for everyday towing, COMPASS has the perfect solution.



## BUILT TO A HIGHER STANDARD

### 1 TUBE MAIN RAILS

Lighter than I-Beam competitors while providing more torsional rigidity. Our trailers haul more and last longer.

### 2 FULL HEIGHT Z-CROSSMEMBERS

Standard on all steel frames, Z-shapes maximize strength without adding weight. This provides you with a true unibody frame.



### 3 FULLY WELDED WHEELBOXES

Protect your valuables from the JASPERs by tying the wheelbox to the dust-proof wall. This prevents dust and debris from blanketing your cargo.



### 4 REINFORCED PLATE

7 ga steel bentline reinforces the tongue assembly to the main rail. This distributes the forces over a wider area and picks up the full strength of tube tongue members.

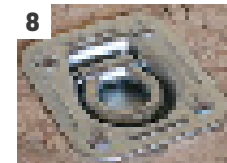


### 5 DUST WALL DESIGN

Featured on 8.5' models, it prevents water, dust, and debris from entering the interior and inner wall cavity while adding strength as a structural component. All other models are sealed by the wall sitting on the frame rail.

### 6 CROWNED TUBE ROOF BOWS

Superior to stamped hat sections, crowned tube bows transfer vertical loads to the sidewalls for added strength and shed water more effectively than flat roofs.



### 8 TIE DOWNS

All of our recessed floor mounted D-rings are bolted to a frame-welded backing plate.

### 7 ELECTRIC BRAKES

When it comes to safety, we will never cut corners. Gel-coat fittings are used on all brake connections. All tandem and triple axle models have brakes on all axles.



### 9 HEAVY DUTY HINGES

All ramp doors are standard with heavy duty hinges, grease zerks and a solid 3/4" steel rod for added strength.

# COMPASS

TRAILERS By Novae®



COMPASS Trailers  
Novae LLC  
11550 Harter Drive  
Middlebury, IN 46540



Information printed in this brochure is based upon the latest product data available at the time of printing. COMPASS reserves the right to make changes at any time pursuant to colors, materials, models, specifications, options or pricing without notice or obligation. All specifications are approximate and dimensions are nominal. Text may refer to optional equipment which may not be included as standard items on your model of choice. Photography and illustrations may also show optional items available at an additional cost. Consult your authorized COMPASS dealer for complete details. All rights reserved.

© 2023 Novae LLC



*Authorized COMPASS Trailer Dealer*